

# Ballarat Station bus interchange project



## About the Project

On behalf of the Victorian Government, VicTrack has developed the design for Ballarat Station's new bus interchange.

Ballarat is one of the fastest growing areas in Victoria, with more people relying on our regional transport services. This is why we're continuing to improve local transport facilities.

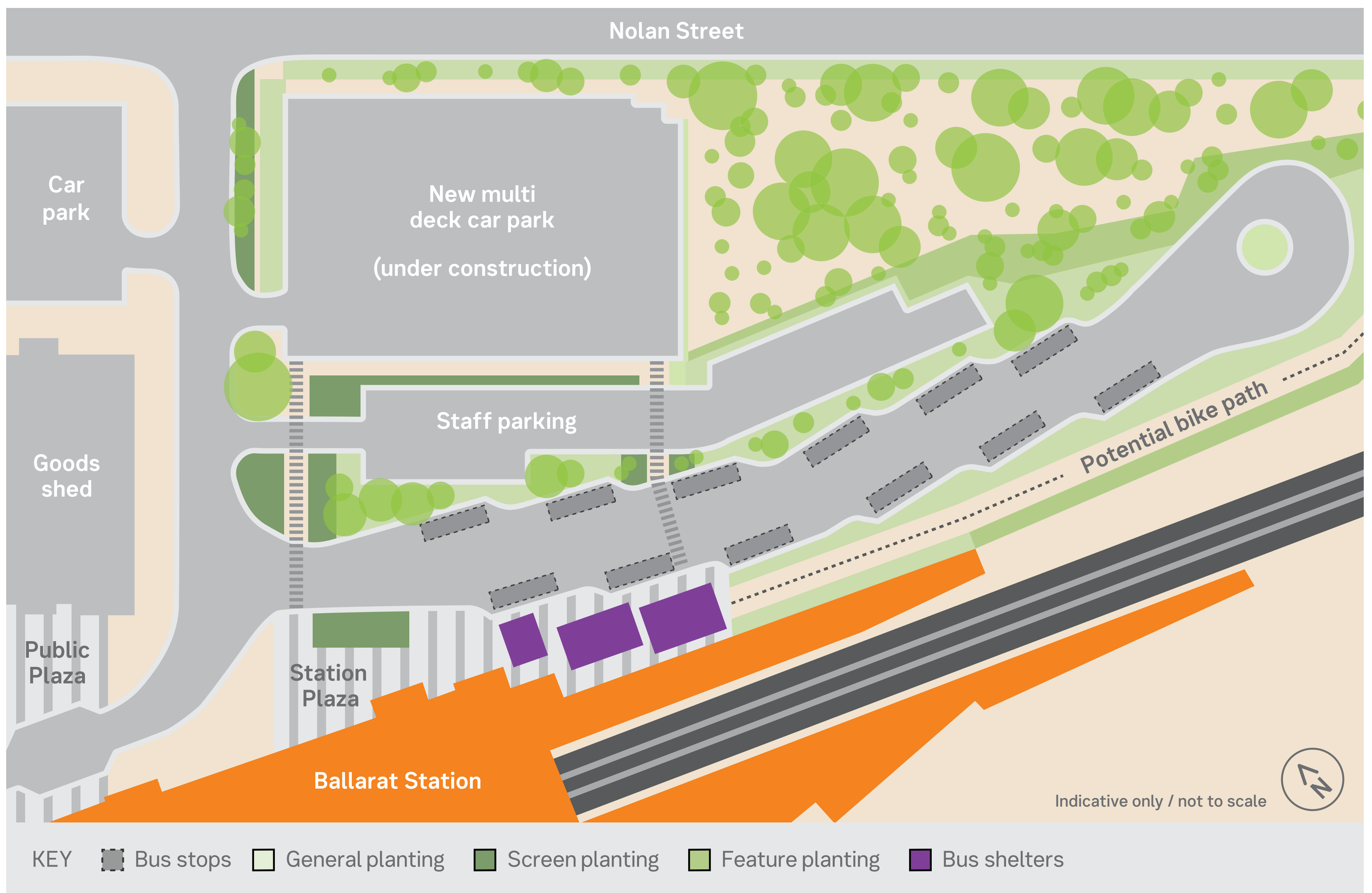
The new bus interchange is just one part of the plans to redevelop the Ballarat Station precinct. It will give buses a permanent home, bringing local buses closer to the station.

## The benefits

- Better connections between the train station and local bus services
- Easier interchange to local buses, trains and coaches
- Improving the overall appearance of the station precinct
- Reflects the important heritage values of the area



# Ballarat Station bus interchange design



**Based on feedback from the community and transport stakeholders Victrack has developed a design for the bus interchange.**

## Next steps

A permit to construct is required from Heritage Victoria with construction expected to commence in September 2018

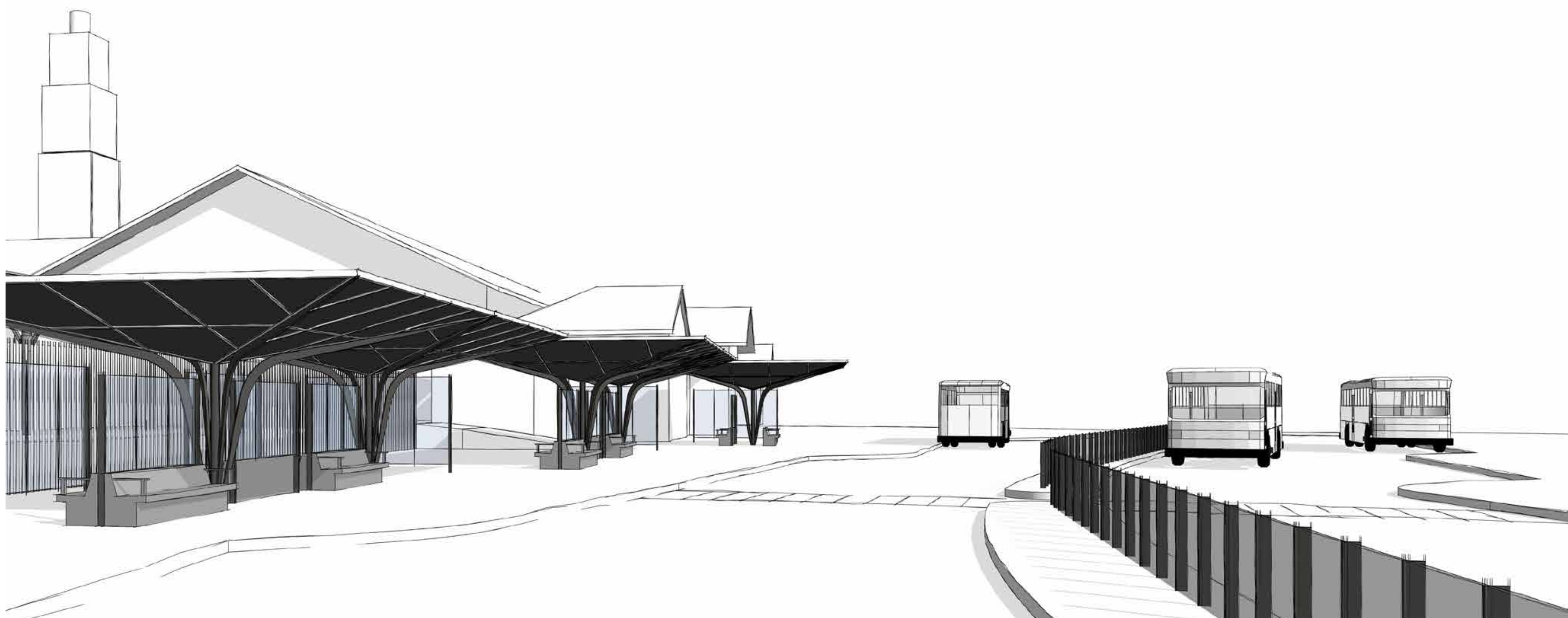
## Key features

- 12 new bus bays for local buses
- Passenger shelters for weather protection
- Heritage sensitive design
- Lighting and CCTV
- Pedestrian crossings for safer access to the car park and station entrance
- Improved landscaping to tie into the broader precinct redevelopment
- Improved way finding and connection through the precinct

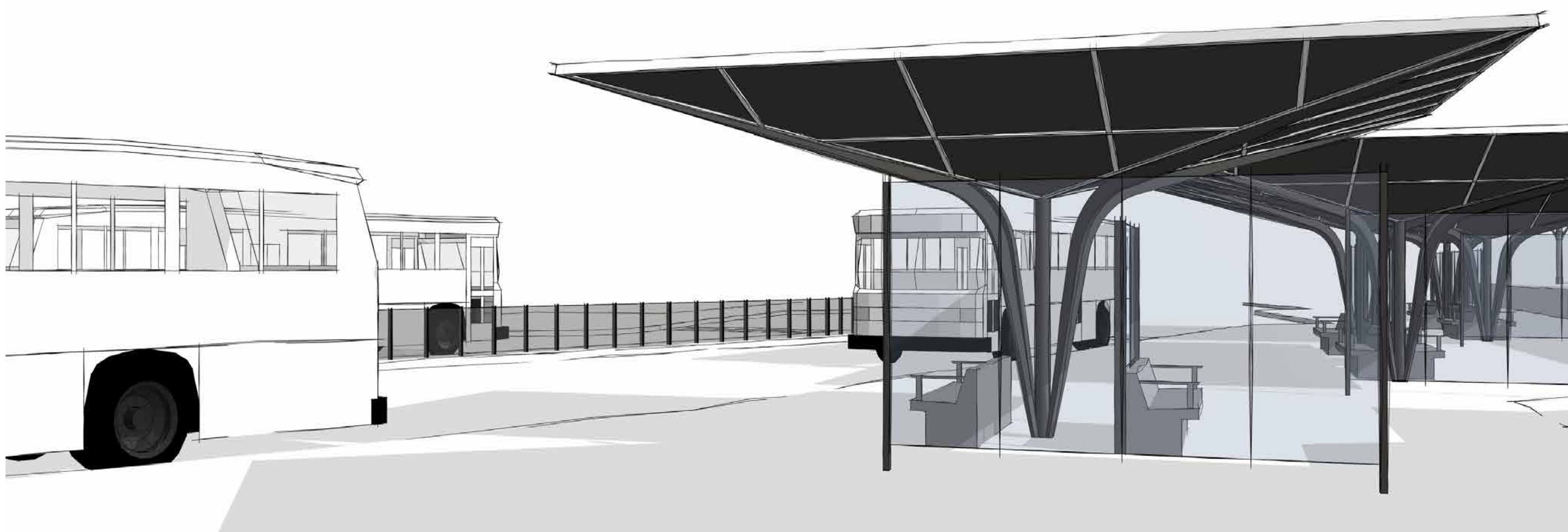
Learn more about the concept design at [victrack.com.au/ballaratbusinterchange](http://victrack.com.au/ballaratbusinterchange)



# Ballarat Station bus interchange design



Bus interchange looking west towards Lydiard Street



Bus interchange looking east